

### OPTION A Full Sonorisation - Big Clubs and Festivals

Each line comes out of the splitter available in the band "Technical rack". Important ! Volume automations are already included in the sources. No balance needed between songs. **FIXED GAIN STAGING !** For example: Guitar Solo sounds are Louder than rhythm.

				PAN	LVL
01	Kick	XLR (MIC)		C	
02	Snare	XLR (MIC)		C	
03	H Tom	XLR (MIC)			
04	M Tom	XLR (MIC)			
05	F Tom	XLR (MIC)		R	
06	E-Drums	XLR / Line Level	<b>! Attention !</b> This is the main sound of the drums. Start with this and then add the real mics.	C	
07	Bass	XLR / Line Level	For the moment, Bass is a pre-recorded track.	C	
08	Guitar 1 Amp Sim (Faruk)	XLR / Line Level	<b>! Attention !</b> Volume changes are managed by the band. When the guitar needs to be quieter or louder, it happens immediately in the sound.	L	<a href="#">🔗</a>
09	Guitar 2 Amp Sim (Seb)	XLR / Line Level	<b>! Attention !</b> Volume changes are managed by the band. When the guitar needs to be quieter or louder, it happens immediately in the sound.  When this guitar is not used, this input receives a delayed signal of guitar 1 to thicken the sound.	R	<a href="#">🔗</a>
10	Lead Vocal + Fx	XLR / Line Level	This is the lead vocal with compressor, delay and reverb already applied!	C	
11	Backing Vocal + Fx	XLR / Line Level	vocal with compressor, delay and reverb already applied!	C	
12-13	Synths L + R	XLR / Line Level XLR / Line Level	<b>! Attention !</b> Volume changes are managed by the band. When the synths needs to be quieter or louder, it happens immediately in the sound.	L R	

#### Optional

14-15	Overheads L + R	XLR (MIC) XLR (MIC)			
16	Lead Vocal (DRY MIC)	XLR (MIC)			

**OPTION B****Partial Sonorisation - Small Clubs**

The band provides bass, guitars and synths premixed. The drums and vocals need to be balanced on top of that.

01	E-Drums (Mono)	XLR (MIC)	
02	H Tom	XLR (MIC)	
03	M Tom	XLR (MIC)	
04	F Tom	XLR (MIC)	
05-06	Instruments Premix L + R	XLR / <b>Line Level</b> XLR / <b>Line Level</b>	Merged tracks extracted from the band in-ear monitor mixer.
07	Lead Vocal + Fx	XLR / <b>Line Level</b>	This is the lead vocal with compressor, delay and reverb already applied!
08	Backing Vocal	XLR (MIC)	vocal with compressor, delay and reverb already applied!

Optional

09	Lead Vocal (DRY MIC)	XLR (MIC)	
----	----------------------	-----------	--

**OPTION C****Full autonomy - Clubs and Bars**

The band provides the mix.

01-02	MIX L+R	XLR / <b>Line Level</b> XLR / <b>Line Level</b>	Mix fully managed by the band via the in-ear monitor mixer.
-------	---------	--	---

**Band: Almaniax**

4 musicians

**Members**

Sébastien Rombout - Lead Vocals + Guitar

Fiona Rombout - Synths + Backing Vocals

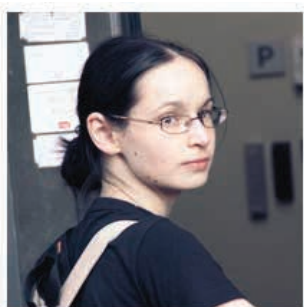
Valentine Potten - Drums

Faruk Coban - Guitar

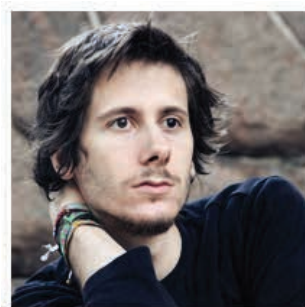
**Catering specifications**

1x No chicken

1x No pork

**Booking Contact:**

Valentine Potten  
valentine.potten@gmail.com  
+32 (0)486/92.59.18

**Technical Contact:**

Sébastien Rombout  
serom56@gmail.com  
+32 (0)496/36.61.03